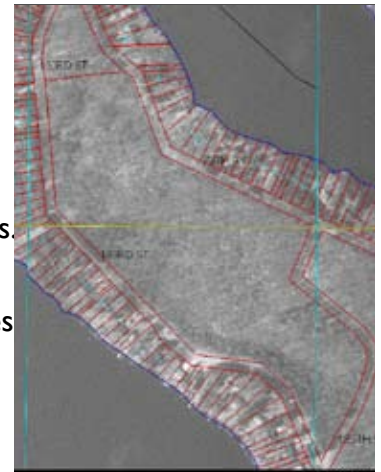




UWEC Biologists Studying Boyd Park

The biology of the new Boyd Park Nature Preserve will be featured at The Chippewa County Land Conservancy's 2005 Annual Meeting at 7 pm Tuesday, May 10, in Room 121 of the Chippewa County Courthouse in Chippewa Falls.

Christina Beuning, and Chris Floyd, UWEC biology professors, will describe the biotic inventory they are conducting at Boyd Park, and will share some of the preliminary highlights. They will be joined by student investigators Amanda Plain and Claire Waldvogel. Christina is a vegetation and ecology specialist, while Chris specializes in ornithology and mammals. Their investigation will influence the property's management plans as well as providing a field experience for the students.



Boyd Park

Annual Meeting

7 pm, Tues., May 10

Courthouse, Rm 121

There will also be a progress report to members on the activities of the past year, and election of board members.

Please join us and help celebrate our successes.

CCLC Joins Neighborhood and Volunteers to Celebrate Boyd Park

CCLC volunteers welcomed neighbors, supporters, and volunteers at a dedication event to celebrate the creation of the new Boyd Park Nature Preserve on September 18, 2004. After comments from Alison Sazama, president of CCLC, the participants took a first-hand look around the property and ended with refreshments and conversation.

Evelyn Joas, whose vision led to the creation of the nature area, was remembered, as was the Boyd family, after which the park is named. The Chippewa Herald featured a story about the park and the legacy of the Boyd

continued on page 3



Celebrating Boyd Park Nature Preserve



Please Renew Your Support!

All memberships in the Chippewa County Land Conservancy are on an annual basis, so if you have not already sent in your annual renewal contribution, please do so today. If you're not currently a member, please join us! **THANKS!**

Thank You To Our Contributors!

Our organization requires funds for the expenses involved in conserving land. We have received many donated services, but appreciate the financial support of the following donors in the past year:

Individuals: Ann & Michael Arneson, Pat Andress, Bob & Lois Bodeau, Gerald & Jerilyn Brost, Burt & Alice Brovold, John & Glenda Delamater, Eleanor Flunker, Ruth Anne Gilbertson, Robert & Constance Hartshorn, Bruce Hayhoe Sr., Marilyn Holte, Susan Huettner, Joe Joas, Sam LaRue, Sean LaRue, Bill & Karen Lea, Mark & Ellen Levesseur, Sally L. Lewis, Richard A. Magyar, Dan Masterpole, John C. Molloy, David Nashold, Ken Parejko, Jodi & Todd Peterson, Dave Raihle Sr., Ken, Bobbi, and Eric Sarauer, Alison Sazama, Richard B. Smith, William Sprague, Steve M. Thaler, Paula Kleintjes & Steve Thon, John Thurman, and Robert & Ellen Wing.

Businesses: Rooney Printing, Northwestern Bank, Mower Insurance, and XMI Corporation.

Please renew your support today! *Contributions to the Conservancy qualify as tax deductible charitable contributions.*

Chippewa County Land Conservancy

Board of Directors

Alison Sazama Chippewa Falls 723-1999
President

David Nashold Chippewa Falls 723-2086
Secretary

Jerry Brost Chippewa Falls 723-9534
Treasurer

John Molloy Boyd 644-3314

Richard Smith New Auburn 967-2164

John Hibbard Eau Claire 835-8448

Pat Andress Chippewa Falls 723-9157

CCLC Assessing Its Effectiveness

CCLC's board has participated in an assessment of its organizational effectiveness offered by Gathering Waters Conservancy, the state-wide organization that serves the land trust community. The assessment was an outgrowth of suggestions raised at the 2003 annual meeting.

Karen Bassler, program director at Gathering Waters, conducted surveys and evaluated the activities of CCLC. In late summer a meeting was conducted by Karen with the board members to review the conclusions and develop a plan to improve where needed.

The Boyd Park dedication was an outgrowth of this workshop.

By-Law Change and Two Directors To Be Elected at Annual Meeting

A By-Law change will be voted on at the annual meeting. It will amend Article 4, Section 1 to provide that the number of directors shall be as set from time to time by the Directors.

Two directors will be selected. The terms of Jerry Brost and Alison Sazama are ending.

Many Ways To Care For The Land

Local land trusts promote a variety of conservation options that provide permanent protection for significant areas. Most often, these options target land and water resources with natural, recreational, scenic, historic, or productive value. For conservation-minded landowners, such protection strategies are both practical and essential to preserving the land.

In order to ensure permanent protection, a landowner may choose to donate property or a conservation easement to a land trust. An easement places protective restrictions on present and future uses while the landowner retains ownership and use of the land. In all cases, the land trust and landowner work together to create a protection strategy that meets the conservation needs of the land as well as the financial needs of the landowner.

For more information, contact the Chippewa County Land Conservancy (723-1999).

Susan Huettner Donates Paint Creek Preserve

A 67.3 acre property on Paint Creek at the southeast corner of Lake Wissota has been donated to the Conservancy by Susan Huettner of Cadott.

The property, which will honor Susan and Frank Huettner, consists of oak woodlands, a small stream, and some Paint Creek frontage with a relatively undeveloped and scenic overlook.

The property is being preserved as open space to protect it from development.

Susan Huettner acquired the property many years ago as a wild place to visit and enjoy nature. Over the years the area around it has developed, but it will remain undeveloped and wild as she wished through her generous donation to the Conservancy.

Future projects include developing a management plan for the property.

Volunteers Always Welcome!

CCLC has no paid staff, and all work is done by volunteers. Would you like to help? Contact Alison Sazama to find out what you can do.

Our new properties need property stewards. If you'd like to participate in developing plans, monitoring, or maintenance, we'd love to hear from you!

Boyd Park Dedication... from page 1

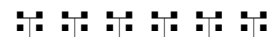
family, whose desire to see the land protected from development led to the significantly reduced price sale to CCLC.

Evelyn's first husband Robert Boyd had been the land agent who purchased the land that would become Lake Wissota. He purchased this parcel for himself, but initially found it difficult to sell property on the new lake. The preserve, along with a nearby county forest parcel and a school forest, preserves a green corridor for wildlife and human enjoyment in the rapidly suburbanizing area.

The property was purchased by CCLC using funds from the Knowles-Nelson Stewardship Fund and Chippewa County's Land Conservation Fund. The use of public funds insures that the land will be open for public use and enjoyment.

Many neighbors at the dedication were interested in the changes that the new status of the land would bring to their neighborhood. A draft management plan was shared with neighbors and their comments were welcomed. Many shared concerns about hunting.

Boyd Park Nature Preserve is located at 185th and 183rd Streets in the Pine Harbor area on the east side of Lake Wissota.



Private Land Preservation Threatened by Federal Action

Congressional committees are currently considering recommendations that would severely restrict or effectively eliminate the tools currently available to landowners to preserve and protect their land from development. Using cases where a few landowners fraudulently took excessive tax deductions, for example, they have proposed reducing the tax deduction available to all honest landowner-taxpayers. This and other recommendations would make it very unlikely that many landowners could financially afford to preserve their property.

In response to this, the Land Trust Alliance has coordinated the nation's land trusts in an effort to improve training and standards, and is leading a fight to prevent congress from enacting these severe measures.

The land trust community believes that eliminating tax benefits for land conservation is short-sighted because it will cut off a large percentage of land protection donations and trigger landowners to sell at market rates to developers, furthering sprawl and endangering scarce high quality open space at the same time that government funds for purchasing land is scarce.

Congressional staff have proposed eliminating tax incentives for owners who live on land they are protecting with easements, and slashing other easement tax breaks by two-thirds. Also, they propose deductions be limited to the donor's basis in the property when land is donated or sold at reduced cost.

For more information on this issue, see <http://www.lta.org/publicpolicy/ppc.htm>, or <http://www.gathering-waters.org/Policy/Federal.htm>.

Join (or Renew Your Support) Today!

Yes, I want to continue to support private land conservation in the Chippewa County Area as a member of the Chippewa County Land Conservancy!

Membership Level:

- Individual (\$25) Senior/Student (\$15) I'd like to volunteer. Please contact me.
 Family (\$35) Corporate (\$100)

Name: _____

Address: _____

City, State, Zip: _____

Phone: _____ Email: _____

Please use the enclosed envelope or return to Chippewa County Land Conservancy, PO Box 884, Chippewa Falls WI 54729. Thank you!



Our Conservation Scorecard:

2 Conservation Easements
3 Properties Owned
197 acres Protected

Please respect colored flags and tape at Boyd Park. It is part of a biotic inventory being conducted by UWEC. Thanks!



Chippewa County Land Conservancy
P.O. Box 884
Chippewa Falls, WI 54729

Annual Meeting

7 pm Tuesday, May 10, 2005
Chippewa County Courthouse
Chippewa Falls WI

www.chippewaconservancy.com