



Land Protection Highlights 2006

P.O. Box 884 • Chippewa Falls, WI 54729

www.chippewaconservancy.com

Huettner Preserve Celebrated!

Members, neighbors, and supporters alike joined together on May 9 to celebrate and explore the 67.4 acre Huettner Preserve, the CCLC's newest public preserve and the Conservancy's second in the Town of Lafayette.



The property is a gift to the community by Susan Huettner of Cadott and her late husband Frank and is located along Paint Creek, south of Lake Wissota.

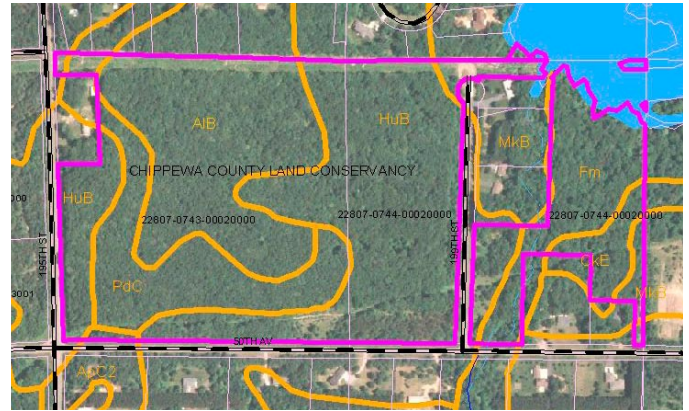
The 30 who attended the event, which coincided with the Conservancy's annual meeting, enjoyed tours of the new property led by naturalists Marybeth Fleming and Sara Rogers, who intrigued all with invertebrates



fished out of the stream and an examination of spring plants. After the tour, the group reconvened at the Lafayette town hall to learn more about the history of the area and about the work of

the Conservancy.

Susan Huettner acquired the land many years ago to preserve it as a special wild place. Now, despite the fact that the property lies in the path of development, her goal for the property has been made permanent, preserving this wild place for future generations to enjoy as she did.



Huettner Preserve

Telling Our Story On Earth Day

CCLC President Alison Sazama increased awareness of protecting special places at the CCLC booth at Earth Day in Eau Claire.

In addition to explaining what CCLC is all about, she offered new members a unique fabric tree as a membership gift.



Outreach opportunities raise awareness of what we do, and give us a chance to seek new members, volunteers and donors.

“When the prairie here blooms in the spring, there is nothing like it. It means the world to me that I can protect that moment for all time by putting this land into the right hands.”

-Landowner who has donated to a Wisconsin land trust

Please Renew Your Support!

All memberships in the Chippewa County Land Conservancy are on an annual basis, so if you have not already sent in your annual renewal contribution, please do so today. If you're not currently a member, please join us! **THANKS!**

Thank You To Our Contributors!

Our organization requires funds for the expenses involved in conserving land. We have received many donated services, but appreciate the financial support of the following donors in the past year:

Individuals: Pat Andress, Ann & Michael Arneson, Bob & Lois Bodeau, Gerald & Jerilyn Brost, Burt & Alice Brovold, John & Glenda Delamater, Eleanor & Bernard Flunker, Ruth Anne Gilbertson & John Lawson, Robert & Constance Hartshorn, Bruce Hayhoe Sr., John Hibbard & Terry Stanley, Marilyn Holte, Joe Joas, Charles Kemper, Paula Kleintjes & Steve Thon, Bill Kroll, Sean LaRue, Bill & Karen Lea, Mark & Ellen Leavessaur, Sally L. Lewis, Richard A. Magyar, Dan Masterpole & Kathy Lembezeder, John C. Molloy, David Nashold, Kenneth & Judy Parejko, Jodi & Todd Peterson, Janine Polk, Karen Possley, Lorraine Richter, Ralph Ringlien, Alison Sazama, Don & Mary Schaefer, Dan & Kathy Simonson, Richard B. Smith & Pat McKearn, William & Peggy Sprague, Steve M. Thaler, John Thurman, Rose Tietz, and Robert & Ellen Wing.

Businesses: Mower Insurance, Rooney Printing, Northwestern Bank, and XMI Corporation.

Please renew your support today! *Contributions to the Conservancy qualify as tax deductible charitable contributions.*

Volunteers Are Vital To Our Work!

CCLC has no paid staff, and all work is done by volunteers. Would you like to help? Contact Alison Sazama to find out what you can do.

Our new properties need property stewards. If you'd like to participate in developing plans, monitoring, or maintenance, we'd love to hear from you!

Chippewa County Land Conservancy

Board of Directors

Alison Sazama Chippewa Falls 723-1999
President

David Nashold Chippewa Falls 723-2086
Secretary

Jerry Brost Chippewa Falls 723-9534
Treasurer

John Molloy Boyd 644-3314

Richard Smith New Auburn 967-2164

John Hibbard Eau Claire 835-8448

Pat Andress Chippewa Falls 723-9157

Dan Simonson Chippewa Falls 723-9649

Projects Currently In Development

The Chippewa County Land Conservancy is always looking for new ways to conserve wild and scenic Chippewa County and area lands.

Currently we are working on several new projects, including one donation and three conservation easements, as well as participating in development of a significant new purchase project.

Many Ways To Care For The Land

Local land trusts promote a variety of conservation options that provide permanent protection for significant areas. Most often, these options target land and water resources with natural, recreational, scenic, historic, or productive value. For conservation-minded landowners, such protection strategies are both practical and essential to preserving the land.

In order to ensure permanent protection, a landowner may choose to donate property or a conservation easement to a land trust. An easement places protective restrictions on present and future uses while the landowner retains ownership and use of the land. In all cases, the land trust and landowner work together to create a protection strategy that meets the conservation needs of the land as well as the financial needs of the landowner.

For more information, contact the Chippewa County Land Conservancy (723-1999).

President's report

Although it may sound strange, it seemed fortuitous that no new land projects came our way during 2005. It was a good time to spend refining and documenting our business practices. We now hold 2 conservation easements on 65 acres and we own 3 properties in fee title totaling 132 acres.

- Conservation Easement on 40 acres in the town of Lafayette donated by Steven Thaler.
- Conservation Easement on 25 acres in the town of Lafayette donated by Steven Thaler.
- 40 acres of lake property in the Town of Sampson on Larabee Lake donated by Dr. Gordon Polder.
- 25 acres in the Pine Harbor Area of Lafayette donated by Evelyn Boyd Joas.
- 67.4 acres along Paint Creek in Lafayette donated by Susan Huettner.

These properties brought to the group an increased level of responsibility and the need for a more detailed and thorough set of policies and procedures. Also timely, was the establishment of a nation-wide accreditation program for all land trusts. Put together by a national group, the Land Trust Alliance, this program will add credibility and integrity to the work that land trusts do. The CCLC staff is working to ensure that our group will be ready to meet these criteria when the time arises. Following are the areas that the group focused on in 2005:

● Land Management

Detailed management plans for all properties are in progress. Some of the items included in this plan are the details of any restrictions placed on the property by the original owner regarding hunting, camping, trails, buildings, vehicles and other uses or non-uses of the land. This also involves discussion of invasive species management, cutting of dead or diseased timber and the like.

Baseline documentation - This is written documentation of the original state of the property and any distinctive qualities it has. Pictures, surveys and appraisals defining the original boundaries of the property and documenting its appearance aid the conservancy in the monitoring process.

● Fundraising and Outreach:

This committee continues to develop ways to further educate the public about our mission. Special events, tours on our new properties, and booths at local exhibits (Earth Day for instance) are some ways in which we invite the public to share in our progress. New brochures are in the planning stage as the current brochures date back to the group's start-up in 1999. Our newsletter keeps current members abreast of our progress and we continue to look for creative ways to keep a cash reserve for our operations. These funds are needed to help us protect and maintain our properties to the level that is expected by our donors. Some of the costs we incur are signs and signposts, paper, envelopes and photos for our mailings, fees for supporting memberships (Gathering Waters and the Land Trust Alliance) and insurance.

● Executive Committee

As the amount of land that we protect increases, so does the level of paperwork. Documenting our financial reporting systems and fiscal responsibilities has been another focus of the group in 2005. The executive committee is also working on a strategic plan for the next 3-5 years. This plan will set goals for the group and bring a cohesive vision to the work that we do. This plan will also include an annual budget and a policy for endowment funds for our properties. The endowment funds are another way for the land trust to fund the ongoing work that we do to protect our properties for generations to come.

And one final note - Please join me in give a BIG thank you to the following people:

The board of directors:

Pat Andress	Jerry Brost
David Nashold	John Hibbard
John Molloy	Dan Simonson
Richard Smith	

Volunteers:

Bill Lea	Kristina Beuning
Chris Meyer	Sara Schmidt
Marybeth Fleming	Pat Mckearn

Here's to another successful year!

Alison Sazama

Join (or Renew Your Support) Today!

Yes, I want to continue to support private land conservation in the Chippewa County Area as a member of the Chippewa County Land Conservancy!

Membership Level:

- Individual (\$25) Student (\$15) Additional Contribution (_____)
- Family (\$35) Corporate (\$100) I'd like to volunteer. Please contact me.

Name: _____

Address: _____

City, State, Zip: _____

Phone: _____ Email: _____

Please use the enclosed envelope or return to Chippewa County Land Conservancy, PO Box 884, Chippewa Falls WI 54729.

Thank you!



Chippewa County Land Conservancy
P.O. Box 884
Chippewa Falls, WI 54729

www.chippewaconservancy.com